

We reserve the right to revise, change and/or substitute product features, dimensions, specifications, architectural detail and design without notice. This plan is for illustrative purposes only and is not part of a legal contract. Prices are subject to change without notice. Building is approximately 90 years old and existing conditions include irregularities. As a result, all areas are approximate and will vary even between similar units.

Unit 340

| | |
|----------------|---------|
| Net Floor Area | 1675 SF |
| Balcony Area | 974 SF |
| Mezzanine | 55 SF |
| Approx. Gross | 2704 SF |

This drawing is copyrighted and is the sole property of

Meyers-Welsh Architecture-Design, LLC
It is excluded for use by the property owner, reproduction or other use of this drawing or the information contained herein without the written permission of the architect is strictly prohibited.

All rights reserved
Copyright 2005

PROJECT TITLE

Chesapeake Loft Condominiums

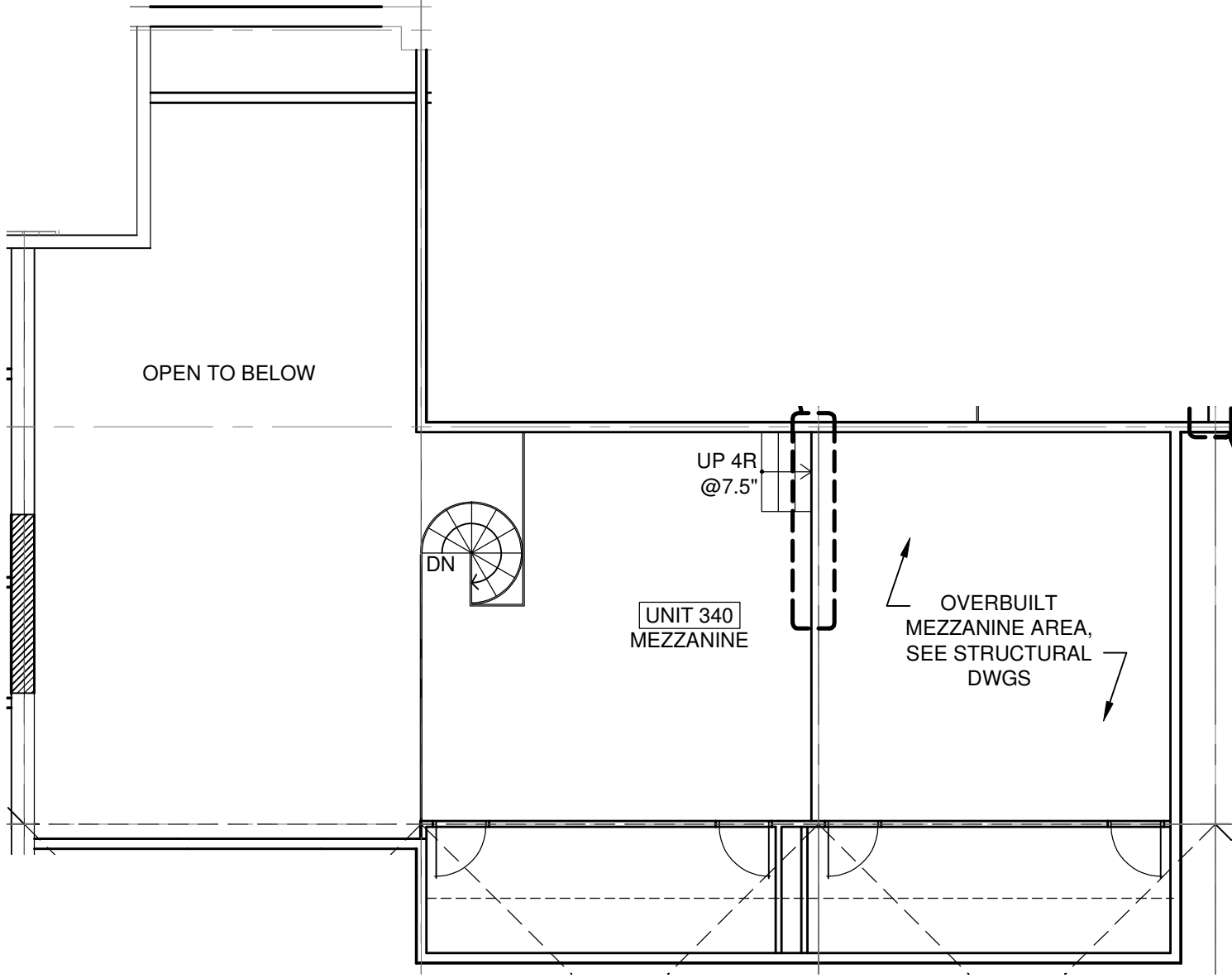
401 W. Shoreline Dr.
Sandusky, OH 44870-2414

SCALE: 1/8"=1'-0"
DATE: August 29, 2005
MEYERS-WELSH PROJECT NUMBER:
2002-32



meyerswelsh
architecture+design

15 east gay street, suite 2a
columbus, ohio 43215
t: 614.221.9433
f: 614.221.9441



OPEN TO BELOW

UNIT 340
MEZZANINE

UP 4R
@ 7.5"

DN

OVERBUILT
MEZZANINE AREA,
SEE STRUCTURAL
DWGS

We reserve the right to revise, change and/or substitute product features, dimensions, specifications, architectural detail and design without notice. This plan is for illustrative purposes only and is not part of a legal contract. Prices are subject to change without notice. Building is approximately 90 years old and existing conditions include irregularities. As a result, all areas are approximate and will vary even between similar units.

| | |
|----------------------|---------|
| Unit 340 LOFT | |
| Net Floor Area | 1675 SF |
| Balcony Area | 974 SF |
| Mezzanine | 55 SF |
| Approx. Gross | 2704 SF |

This drawing is copyrighted and is the sole property of
 Meyers-Welsh Architecture-Design, LLC
 It is prohibited for use by the property owner, reproduction or other use of this drawing or the information contained herein without the written permission of the architect is strictly prohibited
 All rights reserved
 Copyright 2005

PROJECT TITLE
**Chesapeake Loft
 Condominiums**
 401 W. Shoreline Dr.
 Sandusky, OH 44870-2414
 SCALE: 1/8"=1'-0"
 DATE: August 29, 2005
 MEYERS-WELSH PROJECT NUMBER:
2002-32



meyerswelsh
 architecture+design

15 east gay street, suite 2a
 columbus, ohio 43215
 t: 614.221.9433
 f: 614.221.9441