

We reserve the right to revise, change and/or substitute product features, dimensions, specifications, architectural detail and design without notice. This plan is for illustrative purposes only and is not part of a legal contract. Prices are subject to change without notice. Building is approximately 90 years old and existing conditions include irregularities. As a result, all areas are approximate and will vary even between similar units.

## Unit 300

|                      |                |
|----------------------|----------------|
| Net Floor Area       | 1138 SF        |
| Balcony Area         | 0 SF           |
| Mezzanine            | 815 SF         |
| <b>Approx. Gross</b> | <b>1953 SF</b> |

This drawing is copyrighted and is the sole property of

Meyers-Welsh Architecture+Design, LLC

It is produced for use by the property owner. Reproduction or other use of this drawing or the information contained herein without the written permission of the architect is strictly prohibited.

All rights reserved  
Copyright 2005

PROJECT TITLE

## Chesapeake Loft Condominiums

401 W. Shoreline Dr.  
Sandusky, OH 44870-2414

SCALE: 1/8"=1'-0"

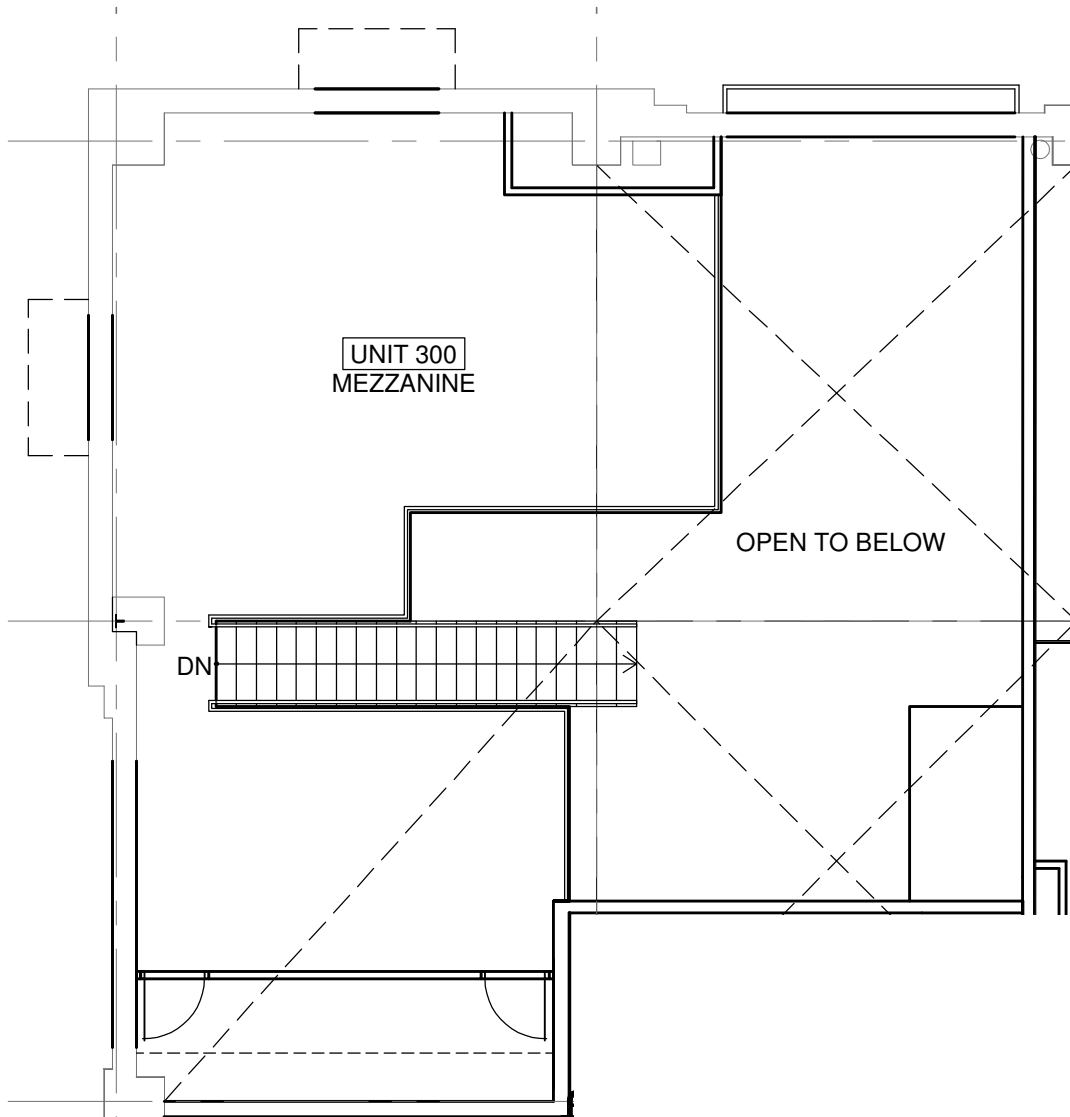
DATE: August 29, 2005

MEYERS-WELSH PROJECT NUMBER:

2002-32



15 east gay street, suite 2a  
columbus, ohio 43215  
t: 614.221.9433  
f: 614.221.9441



We reserve the right to revise, change and/or substitute product features, dimensions, specifications, architectural detail and design without notice. This plan is for illustrative purposes only and is not part of a legal contract. Prices are subject to change without notice. Building is approximately 90 years old and existing conditions include irregularities. As a result, all areas are approximate and will vary even between similar units.

## Unit 300 LOFT

|                      |                |
|----------------------|----------------|
| Net Floor Area       | 1138 SF        |
| Balcony Area         | 0 SF           |
| Mezzanine            | 815 SF         |
| <b>Approx. Gross</b> | <b>1953 SF</b> |

This drawing is copyrighted and is the sole property of

Meyers-Welsh Architecture+Design, LLC

It is produced for use by the property owner. Reproduction or other use of this drawing or the information contained herein without the written permission of the architect is strictly prohibited.

All rights reserved  
Copyright 2005

PROJECT TITLE

### Chesapeake Loft Condominiums

401 W. Shoreline Dr.  
Sandusky, OH 44870-2414

SCALE: 1/8"=1'-0"

DATE: August 29, 2005

MEYERS-WELSH PROJECT NUMBER:

2002-32



15 east gay street, suite 2a  
columbus, ohio 43215  
t: 614.221.9433  
f: 614.221.9441